

Technical Information

Hydraulic Product Guide

Gear Pumps / Gear Motors / Valves / Orbital Motors / Power packs





RYAN HYDRAULICS

Keep the concept seeking excellence, RYAN try our best to create more value for you with products and service.

Ryan Hydraulics

About RYAN

RYAN's manufacture was established in 1986, focusing on providing customers with quality hydraulic components and solutions to hydraulic system in the applications of engineering machinery, mobile industries, agricultural machinery, aviation, mining, and other fields. Main products include gear pump, gear motor, flow divider, orbital motor, load sensing proportional valve, monoblock valve, sectional valve, manifold assembly and hydraulic power unit as well.

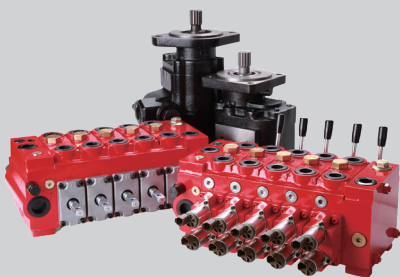
Long-term development strategy

Reducing emissions by new energy is one of RYAN's long-term strategies. RYAN will be providing innovative technologies, products, and services for the global development of new energy, moving towards a century development strategy, and writing a century-new chapter in the hydraulic field.



Innovation leads the future

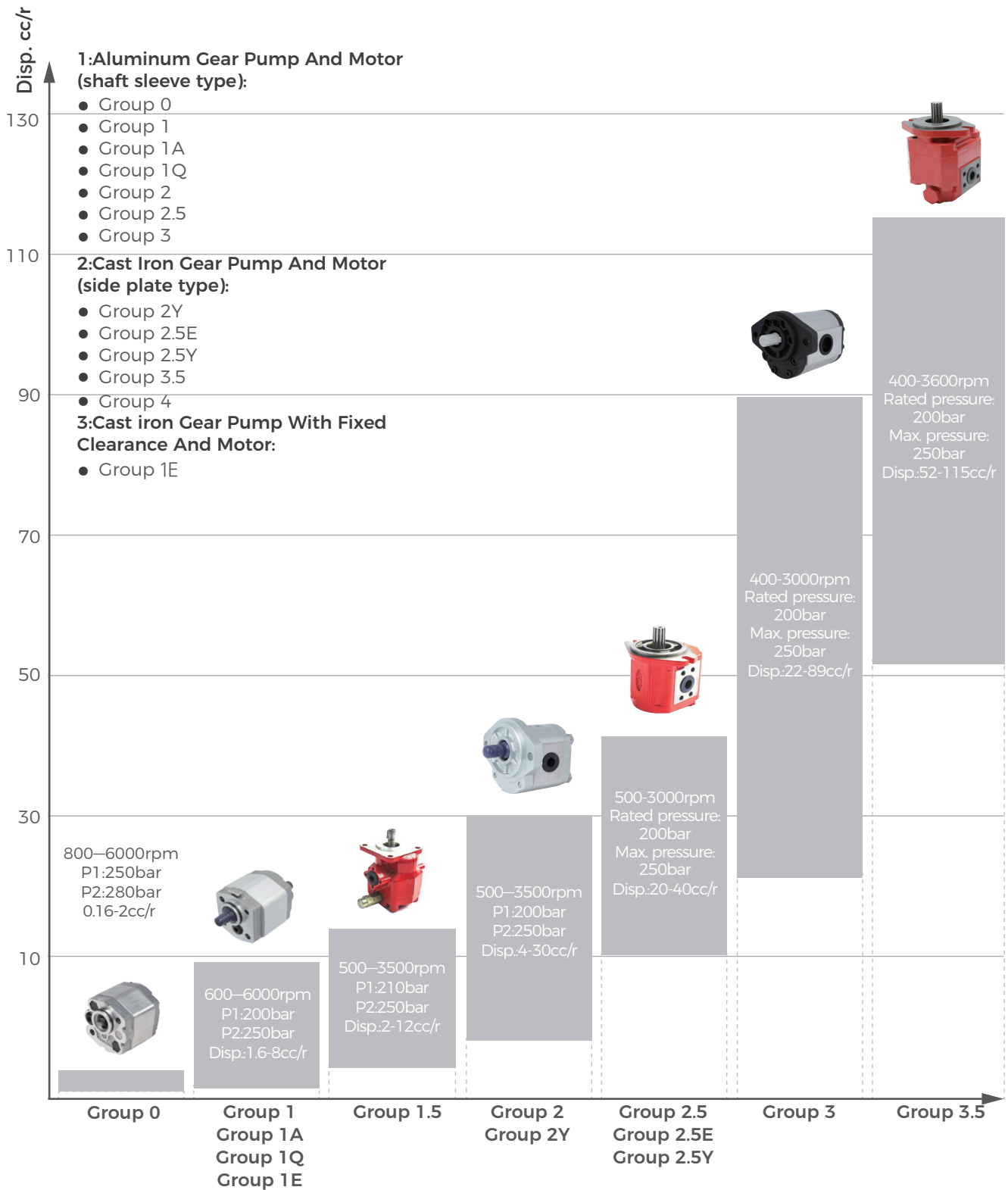
Through a few decades of development, RYAN has built an intelligent manufacturing factory, gathering international R&D talents, accumulating rich R&D and manufacturing experience, possessing independent intellectual property rights, continuously providing customers with new products and technologies, and creating value for all of the customers.

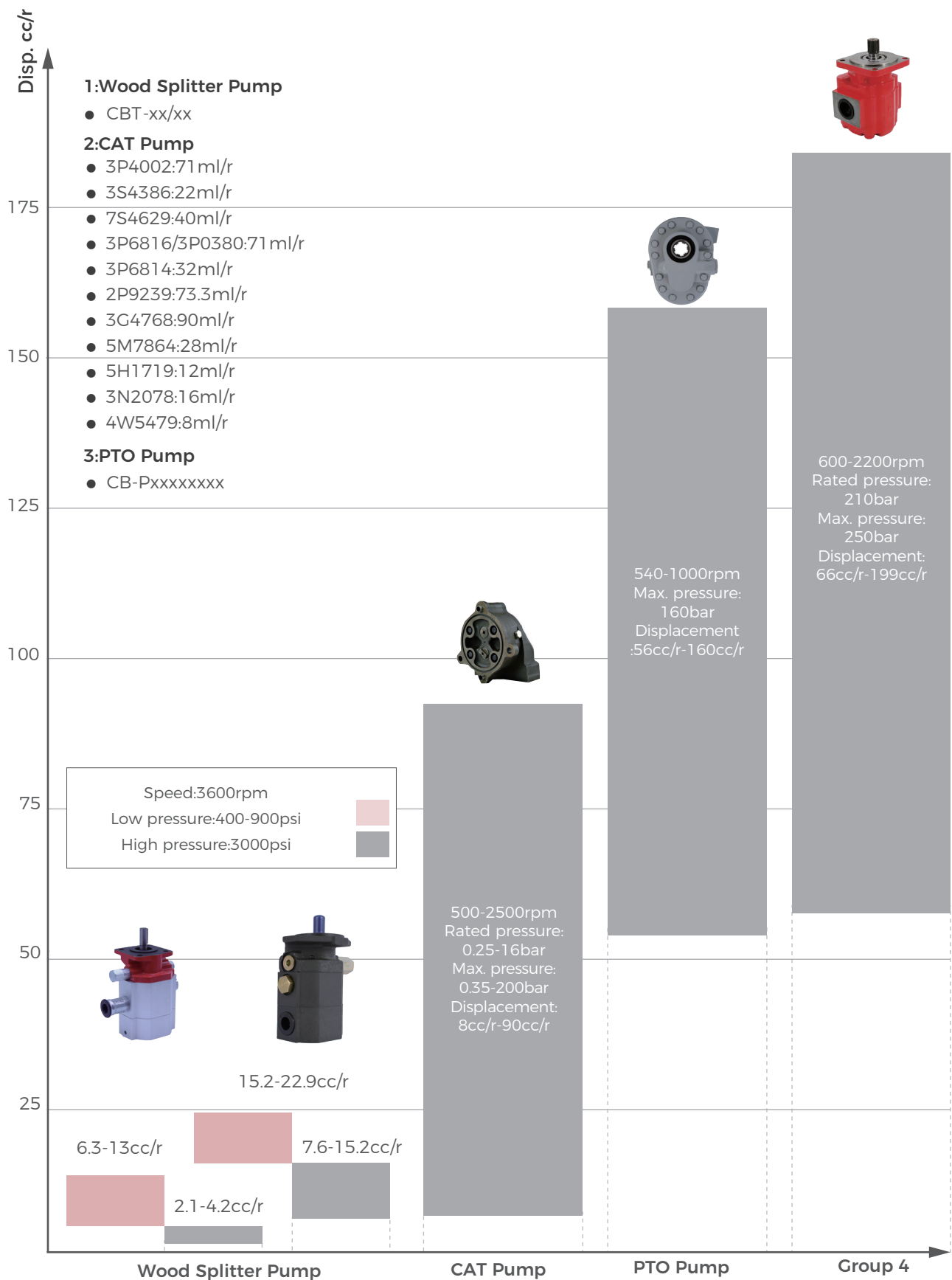


Hydraulic Product Guide

	04-05	└ Gear Pumps And Gear Motors Product Guide
Group 1 Gear Pumps And Gear Motors ┘	06	
	07	└ Group 2 Gear Pumps And Gear Motors
Group 3 Gear Pumps And Gear Motors ┘	08	
	09-10	└ Wood Splitter Gear Pumps
Group 3.5 Gear Pumps And Gear Motors ┘	11	
	12	└ Group 4 Gear Pumps and Gear Motors
PTO Pumps ┘	13	
	14	└ Valves Product Guide
Proportional Valves ┘	15	
	16	└ Sectional Control Valves
Monoblock Valves ┘	17	
	18-19	└ Flow Control Valves
Orbital Motors Product Guide ┘	20	
	21	└ GM Series Orbital Motors
GP/GPH Series Orbital Motors ┘	22	
	23	└ GR Series Orbital Motors
GKA Series Orbital Motors ┘	24	
	25	└ GH Series Orbital Motors
GS Series Orbital Motors ┘	26	
	27	└ GT Series Orbital Motors
GWD Series Orbital Motors ┘	28	
	29	└ GKC Series Orbital Motors
GV Series Orbital Motors ┘	30	
	31	└ Power Packs Product Guide
Power Packs Example ┘	33-34	

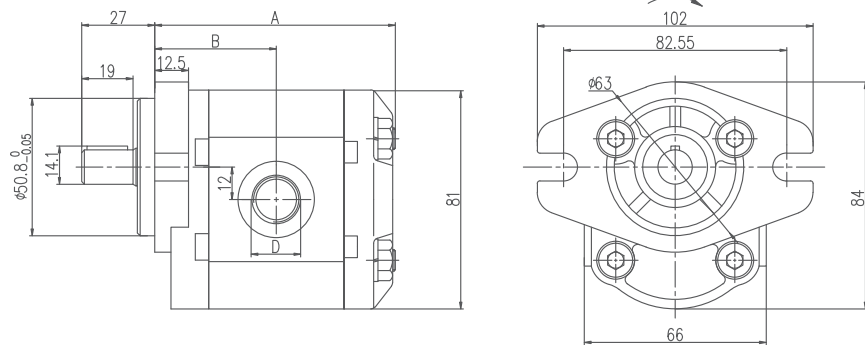
Gear pumps and motors can be used in a variety of mobile vehicles and industrial equipment. With a wide range of American and European mounting flanges, the complete drive shaft range meets all SAE, DIN and European standard splines, flat keys and cone keys, and the back cover is available in cast iron and aluminum alloy. Extruded aluminum pump body, integrated gear, forced-balance floating bushing, special bearings provide excellent volumetric efficiency and overall efficiency.





Group 1 Gear Pump Specification

Model	Series	Disp. cc/rev	Pressure		Speed		
			Rated	Peak	Rated	Minimum	Maximum
			bar		r/min		
Group 1	1 PF	1.1	200	250	2000	600	6000
	1 PF	1.6	200	250	2000	600	6000
	1 PF	2.1	200	250	2000	600	6000
	1 PF	2.7	200	250	2000	600	6000
	1 PF	3.2	200	250	2000	600	5000
	1 PF	3.7	200	250	2000	600	4500
	1 PF	4.2	200	250	2000	600	4000
	1 PF	4.8	160	200	2000	600	3500
	1 PF	5.8	160	200	2000	600	2900
	1 PF	6.0	160	200	2000	600	2500
	1 PF	7.0	160	200	2000	600	2500
1 PF	8.0	160	200	2000	600	2100	



Working Conditions

Filtration accuracy $\geq 25\mu\text{m}$ Oil Temperature: $-25^{\circ}\text{C} - 80^{\circ}\text{C} (-12^{\circ}\text{F} - 175^{\circ}\text{F})$
 Oil Viscosity: 6-200cSt Ambient Temperature: $-22^{\circ}\text{C} - 55^{\circ}\text{C} (-8^{\circ}\text{F} - 130^{\circ}\text{F})$
 Inlet Pressure: 12-32psi

Ordering Code

1	AB	P	F	1.1	L01	O11	O2	R	SS
a	b	c	d	e	f	g	h	i	j
Group	Improved Code	Type	Pressure MPa	Disp. cc/r	Inlet/Outlet Ports mm	Shaft mm	Flange mm	Rotation	Ports Combination
1	At Cast iron front and rear covers	P Single pump	F 20	1.1	L01 G3/8 $\phi 9 \times \phi 12.7 \times 1.45$	O11 Oblate key $\phi 5 \times 7$	O2 2-hole mounting 40*40	R CW	SS Side inlet and side outlet
	Q Aluminum front cover and pump body	DP Double pump	G 25	1.6	L05 G1/2 G3/8	T3 Taper key 1:5	S5 4-hole mounting 52.4*71.9	L CCW	BS Back inlet and side outlet
	A SAE aluminum front cover			2.1	L61 M14*1.5 M14*1.5	F16 Flat key SAE AA $\phi 12.7$	D2 2-slot installation $\phi 82.55$	B Bi-direction	SB Side inlet and back outlet
	AB Interchangeable direction aluminum front and rear covers			L44 G3/8 G1/4			BB Back inlet and back outlet
				8				

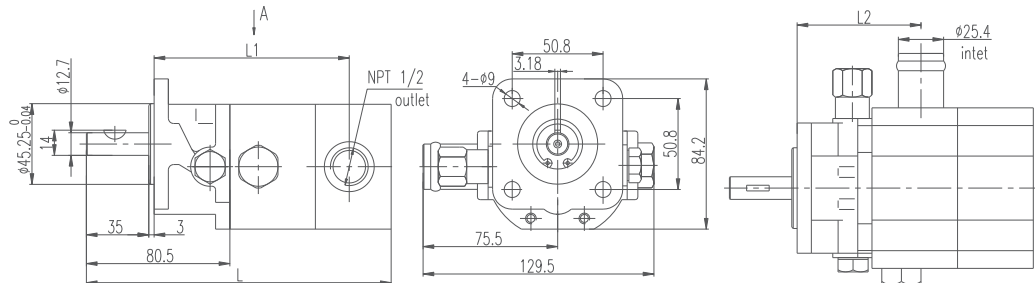
2CB-E Gear Pump Introduction

2CB-E is a combination of high pressure small displacement and low pressure large displacement hydraulic gear pump, there are 12 displacement combinations, the maximum pressure of low pressure pump is 900psi, the maximum pressure of high pressure pump is 3000psi. The preset value of low pressure is 400psi to 900psi(factory preset according to 450psi). Wood splitter pumps are available in both cast iron and aluminum pump bodies. The application of wood splitter pump mainly includes wood splitter, press, etc., which needs to move the cylinder quickly under low pressure, and then automatically switch to the high pressure holding mode of energy saving applications, can be selected.

Specification

Model	Flow (gpm)	Pressure(Psi)		Disp.(Cu.in/r)		Speed (rpm)	Port	
		Low	High	Low	High		Inlet	Outlet
2CB-E6.3/2.1	8	400/900	3000	0.385	0.13	3600	1 IN PIPE	1/2 NPT
2CB-E6.3/3.0	8.5	400/900	3000	0.385	0.183			
2CB-E6.3/3.6	9	400/900	3000	0.385	0.220			
2CB-E8.8/2.1	10	400/900	3000	0.537	0.13			

Dimensions



Working Conditions

Filtration accuracy $\geq 25\mu\text{m}$ Oil Temperature: $-25^{\circ}\text{C} - 80^{\circ}\text{C} (-12^{\circ}\text{F} - 175^{\circ}\text{F})$
 Oil Viscosity: 7-700cSt Ambient Temperature: $-22^{\circ}\text{C} - 55^{\circ}\text{C} (-8^{\circ}\text{F} - 130^{\circ}\text{F})$
 Inlet Pressure: 12-32psi
 Flow(gpm) = Displacement(in³/rev) X Speed (rpm) / 231
 Volumetric efficiency $\geq 93\%$

Ordering Code

2 a	CB-E b		6.3/2.1 c		L10 d	
Group	Type		Displacement		Inlet/Outlet Ports	
2	CB-E	Cast iron pump	6.3/2.1	8GPM	L10	PT3/4 PT1/2
	ACB-E	Aluminum pump	8.8/3.6	11GPM	L08	G3/4 G1/2
			10.9/3.6	13GPM		
			13.0/4.2	16GPM		

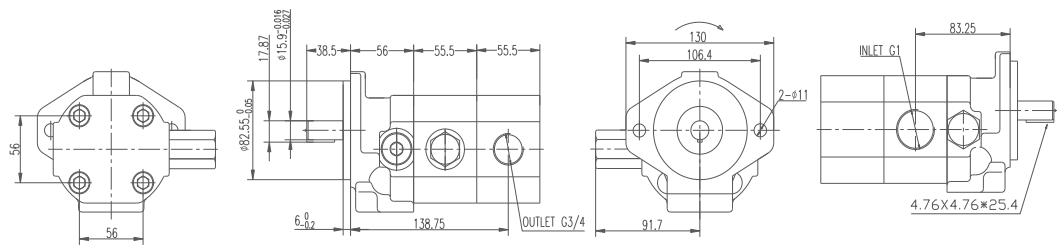
2CB-P Gear Pump Introduction

2CB-P is a combination of high pressure small displacement and low pressure large displacement hydraulic gear pump, the maximum pressure of low pressure pump is 900psi, the maximum pressure of high pressure pump is 3000psi. The preset value of low pressure is 400psi to 900psi(factory preset according to 850psi). Wood splitter pumps are available in both cast iron and aluminum pump bodies. The application of wood splitter pump mainly includes wood splitter, press, etc., which needs to move the cylinder quickly under low pressure, and then automatically switch to the high pressure holding mode of energy saving applications, can be selected.

Specification

Model	Flow(gpm) @3600rpm	Disp. in ³ /rev(cm ³ /rev)		Pressure(psi)		Speed (rpm)	Weight(lbs)
		Low	High	Low	High		
CBT-15.2/7.6	22	0.465(7.63)	0.93(15.26)	400/900	3000	3600	18.6
CBT-22.9/7.6	28	0.465(7.63)	1.395(22.88)	400/900	3000	3600	19.7

Dimensions



Working Conditions

Filtration accuracy $\geq 25\mu\text{m}$ Oil Temperature: $-25^{\circ}\text{C} - 80^{\circ}\text{C} (-12^{\circ}\text{F} - 175^{\circ}\text{F})$
 Oil Viscosity: 7-700cSt Ambient Temperature: $-22^{\circ}\text{C} - 55^{\circ}\text{C} (-8^{\circ}\text{F} - 130^{\circ}\text{F})$
 Inlet Pressure: 12-32psi
 Flow(gpm) = Displacement(in³/rev) X Speed (rpm) /231
 Volumetric efficiency $\geq 93\%$

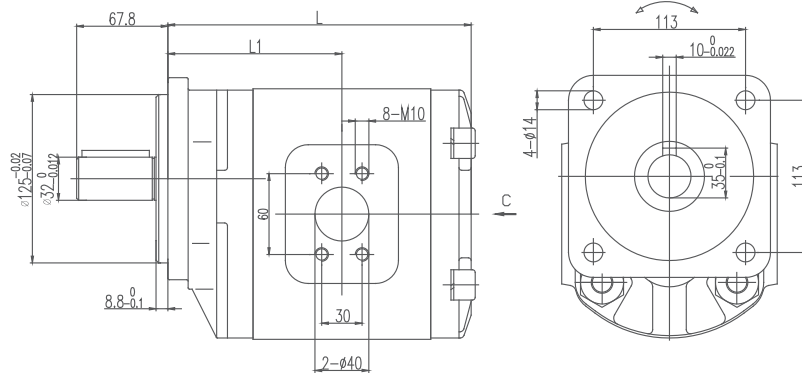
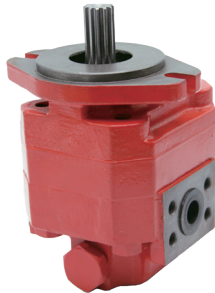
Ordering Code

2 a	CB-P b	15.2/7.6 c	L10 d
Group	Type	Displacement	Inlet/Outlet Ports
2	CB-P	Cast iron pump	L10
		15.2/7.6	G1
		22GPM	G3/4
		22.9/7.6	
		28GPM	

Group 3.5 Gear Pump Specification

Model	Series	Disp. cc/rev	Pressure		Speed		
			Rated	Peak	Rated	Minimum	Maximum
			bar		r/min		
Group 3.5	3.5PF	52	170	210	1500	600	3600
	3.5PF	63	170	210	1500	600	3600
	3.5PF	73	170	210	1500	600	3600
	3.5PF	85	150	180	1500	600	3600
	3.5PF	93	150	180	1500	600	3600
	3.5PF	104	150	180	1500	600	3600
	3.5PF	115	120	140	1500	600	3600

Dimensions



Working Conditions

Filtration accuracy $\geq 25\mu\text{m}$ Oil Temperature: $-25^{\circ}\text{C} - 80^{\circ}\text{C} (-12^{\circ}\text{F} - 175^{\circ}\text{F})$

Oil Viscosity: 6-200cSt

Ambient Temperature: $-22^{\circ}\text{C} - 55^{\circ}\text{C} (-8^{\circ}\text{F} - 130^{\circ}\text{F})$

Inlet Pressure: 12-32psi

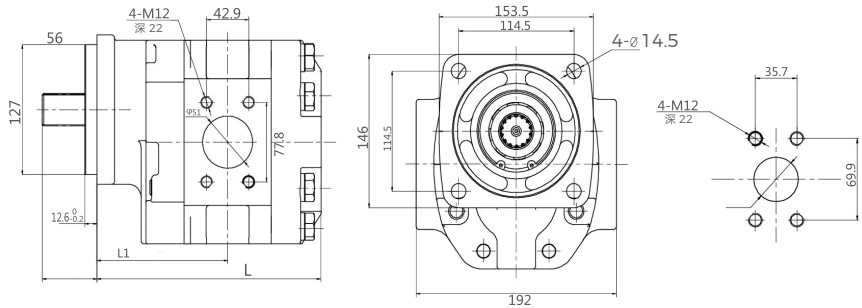
Ordering Code

3.5	B	P	F	34	LJ53	O9	S2	R	SS								
a	b	c	d	e	f	g	h	i	j								
Group	Improved Code		Type	Pressure MPa	Disp. cc/r	Inlet/Outlet Ports mm		Shaft mm	Flange mm	Rotation	Ports Combination						
3.5	B	Cast iron covers	P	F	20	22	L00	G1 G1	O9	Oblate key $\varnothing 4.37 \times 8$	S2	4-slot installation 50.8×50.8	R	CW	SS	Side inlet and side outlet	
	E	Cast iron covers side plate structure	DP	G	25	26	LJ53	1-5/8-12UN-2B 1-5/16-12UN-2B	S70	Spline key $\varnothing 21.81$	D9	2-slot installation $\varnothing 106$	L	CCW	BS	Back inlet and side outlet	
	/	Aluminum structure	TP			34	F10	$\varnothing 56 \times M10 \times \varnothing 27$ $\varnothing 56 \times M10 \times \varnothing 19$	F75	Spline key $\varnothing 19.05$	D14	6-hole installation 146.05	B	Bi- direction	SB	Side inlet and back outlet	
						F12	$\varnothing 62 \times M10 \times \varnothing 33$ $\varnothing 51 \times M10 \times \varnothing 27$	S57	Spline key 11 teeth	SP9	4-hole installation 113×113			BB	Back inlet and back outlet	
						89								

Group 4 Gear Pump Specification

Model	Series	Disp. cc/rev	Pressure		Speed		
			Rated	Peak	Rated	Minimum	Maximum
			bar		r/min		
Group 4	4PF	66	210	250	1800	600	2200
	4PF	83	210	250	1800	600	2200
	4PF	91	210	250	1800	600	2200
	4PF	99	210	250	1800	600	2200
	4PF	116	210	250	1800	600	2200
	4PF	132	210	250	1800	600	2200
	4PF	145	210	250	1800	600	2200
	4PF	149	210	250	1800	600	2200
	4PF	166	210	250	1800	600	2200
	4PF	182	180	210	1800	600	2200
4PF	199	180	210	1800	600	2200	

Dimensions



Working Conditions

Filtration accuracy ≥ 25µm Oil Temperature: -25°C – 80°C (-12°F – 175°F)
 Oil Viscosity: 6-200cSt Ambient Temperature: -22°C – 55°C (-8°F – 130°F)
 Inlet Pressure: 12-32psi

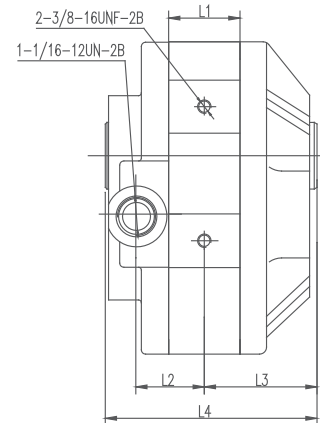
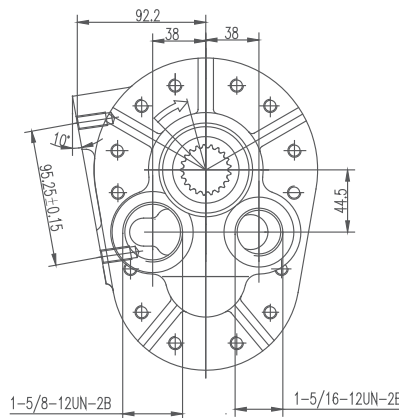
Ordering Code

4	/	P	F	91	F16	S83	S20	R	SS								
a	b	c	d	e	f		g	h	i	j							
Group	Improved Code	Type	Pressure MPa	Disp. cc/r	Inlet/Outlet Ports mm		Shaft mm	Flange mm	Rotation		Ports Combination						
4	/	Cast iron pump	P	Single pump	F	20	66	F16	Ø65*M10*Ø30 Ø65*M10*Ø24	S83	Spline key 14 teeth	S20	4-hole flange 114.5*114.5	R	CW	SS	Side inlet and side outlet
							83							L	CCW	BS	Back inlet and side outlet
							91							B	Bi-direction	SB	Side inlet and back outlet
															BB	Back inlet and back outlet
							199										

PTO Pump Specification

Model	Series	Displacement cc/rev	Pressure	Speed
			Peak bar	Rated r/min
CBP	CBP160LJ53S33BB	160	60(2250 psi)	1000
	CBP125LJ53S33BB	125		
	CBP90LJ53S33BB	90		
	CBP56LJ53S33BB	56		
	CBP160LJ42H21SS	160		540
	CBP125LJ42H21SS	125		
	CBP90LJ42H21SS	90		
	CBP56LJ42H21SS	56		

Dimensions



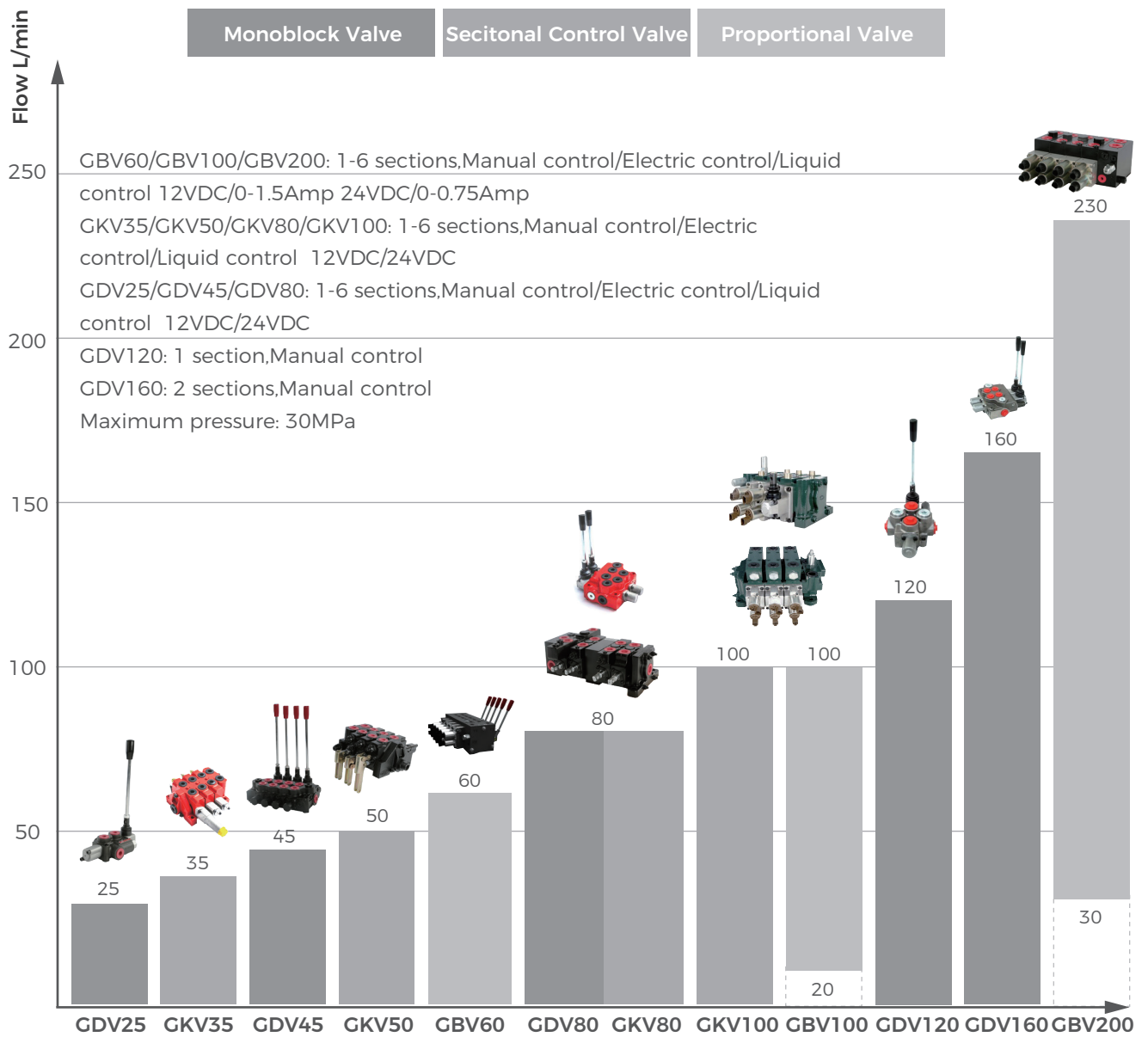
Working Conditions

Filtration accuracy $\geq 25\mu\text{m}$
 Oil Viscosity: 7-700cSt
 Inlet Pressure: 12-32psi

Oil Temperature: -25°C – 80°C (-12°F – 175°F)
 Ambient Temperature: -22°C – 55°C (-8°F – 130°F)
 Volumetric efficiency $\geq 90\%$

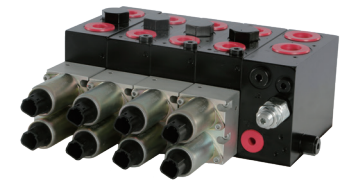
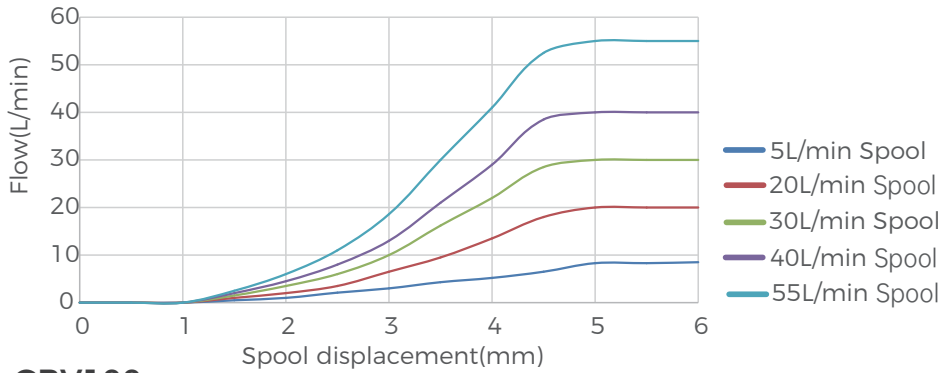
Ordering Code

CBP	125	LJ42	H21	R	SS				
a	b	c		d		e		f	
Group	Displacement	Inlet/Outlet Ports		Shaft		Rotation		Ports Combination	
CBP	56	LJ42	1-5/16-12UN-2B 1-1/16-12UN-2B	S33	Spline key 21 teeth	R	CW	SS	Side inlet and side outlet
	90	LJ53	1-5/8-12UN-2B 1-5/16-12UN-2B	H21	Spline key 6 teeth	L	CCW	BB	Back inlet and back outlet
	125								
	160								

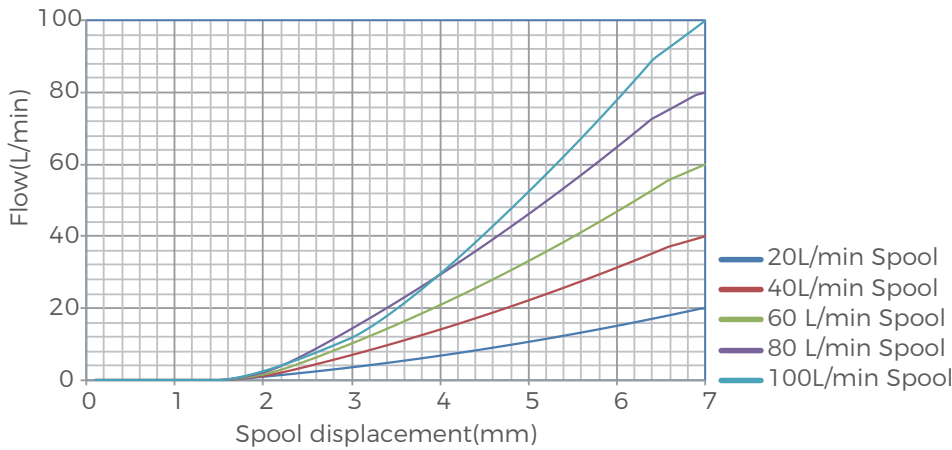


Proportional valve Characteristic for Standard Spool

GBV60



GBV100



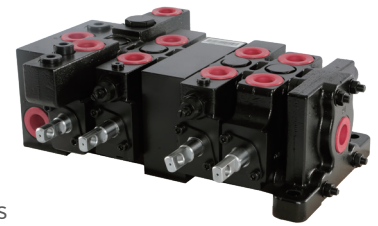
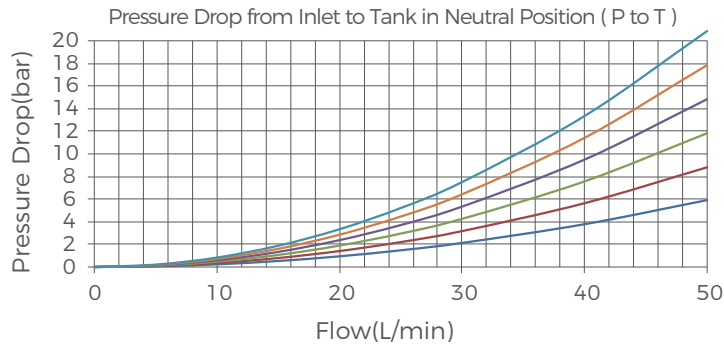
Ordering Code

GBV100		/2	-J01		/160		-D00		-O1		-Z01	
a	b	c	d		e		f		g			
Model L/min	Spools	Inlet section code		Main relief valve pressure		End section		Main section		Main section code		
GBV60	60	1 spool	J01	Fixed pumps without pilot source	160	16MPa	D00	No end cap	O1	1st section	Z01	Basic section
GBV100	100	2 spools	J02	Variable pumps with pilot source	210	21MPa					Z02	With check valve and anti-cavitation
GBV200	220								Z03	With overload valve and anti-cavitation
		8 spools										

-Q2		FG1		DC/12		-QL/80		-O2		-Z02	
h		i		j		k		l		m	
Drive style code		Spool function code		Electrical option		Flow rate		Second section		Main section code	
Q1	Manually operated	FG1	O-type	DC/12	12V	80	80L/min	O2	2nd section	
Q2	Hydraulic control	FG2	Y-type	DC/24	24V						
Q3	Manually operated with detent	FG3	H-type	DC/00	Manual control						
.....		FG4	With Float								
Q8	Electro-hydraulic control with floating										

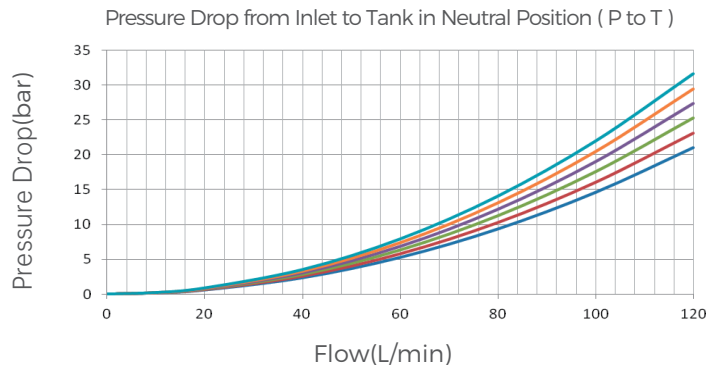
Sectional Control Valve Performance Parameter

GKV35



- 1 section
- 2 sections
- 3 sections
- 4 sections
- 5 sections
- 6 sections

GKV80



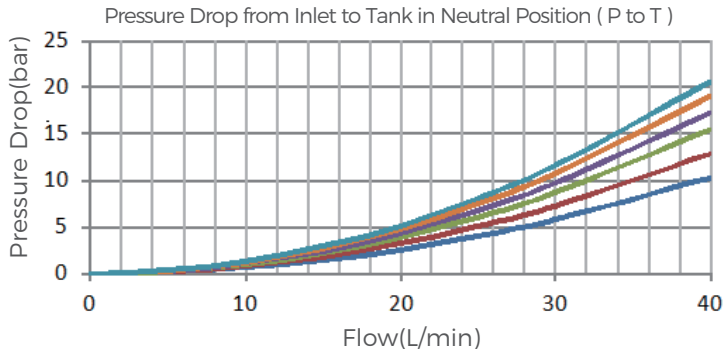
- 1 section
- 2 sections
- 3 sections
- 4 sections
- 5 sections
- 6 sections

Ordering Code

GKV35		/4		-JK01		/160		-DK01		-O1		-ZK01	
a		b		c		d		e		f		g	
Model L/min		Spools		Inlet section code		Main relief valve pressure		Return section code		Main section		Work section code	
GKV35	35	1	1 spool	JK01	With direct-acting relief valve	160	16MPa	DK01	Oil return from inlet section	O1	1st section	ZK01	Load relief valve at both A and B
GKV50	50	2	2 spools	JS01	With priority relief valve	210	21MPa	DY01	Oil return from end cap			ZK02	Load relief valve at A port
GKV80	80	3	3 spools									ZS01	Basic section
GKV100	100	4	4 spools									
-KQ1		-FG1		-DC/12		-QL/35		-RF0		-O2		-ZS01	
h		i		j		k		l		m		n	
Drive style code		Spool function code		Electrical option		Flow rate		Load relief valve		Second section		Work section code	
KQ1	Manually operated	FG1	O-type	DC/12	12V	35	35LPM	RF0	O2	2nd section		
KQ2	Hydraulic control	FG2	Y-type	DC/24	24V			RF1					
KQ3	Manually operated with detent	FG3	H-type	/	No electric control			RF2					
.....							RF3					
KQ6	Electro-hydraulic control with floating	FG5	With Float										

Monoblock valve Performance Parameter

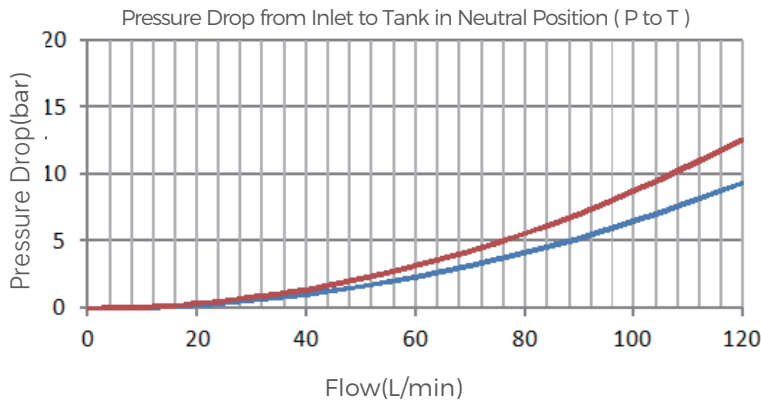
GDV25



- 1 section
- 2 sections
- 3 sections
- 4 sections
- 5 sections
- 6 sections



GDV120



- 1 section
- 2 sections

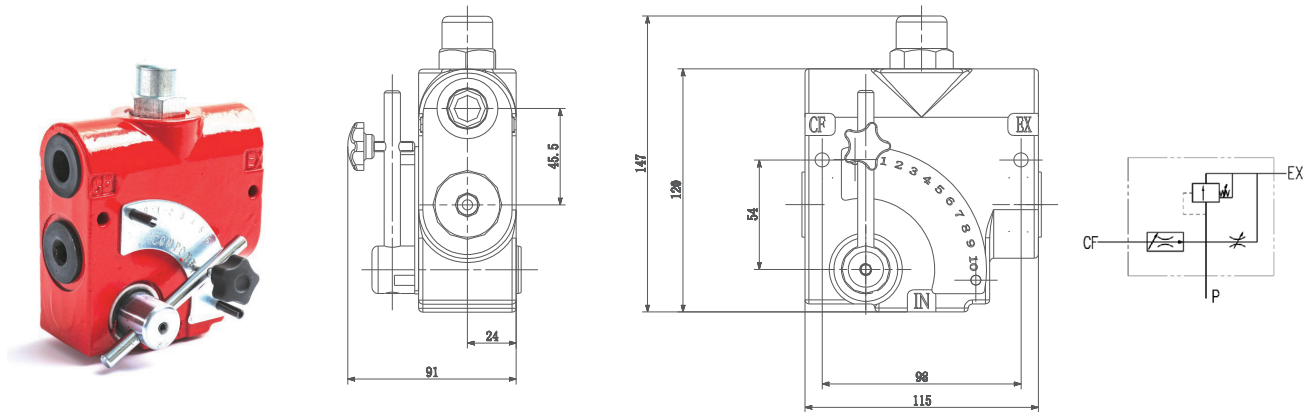
Ordering Code

GDV45		-4		-P1		/210		-T1		-D1	
a		b		c		d		e		f	
Model		Spools		Inlet port code		Main relief valve pressure		Return port code		Power beyond	
GDV25	25	1	1 spool	P1	Port on the top	160	16MPa	T1	Port on the front	D0	Power beyond
GDV45	45	2	2 spools	P2	Port on the side	210	21MPa	T2	Port on the top	D1	No power beyond
GDV80	80	3	3 spools								
GDV120	120									
GDV160	160	6	6 spools								
-O1		-FG1		-KQ1		-DC/24		-O2		-FG2	
g		h		i		j		k		l	
Main section		Spool function code		Drive style code		Electrical option		Second section		Spool function code	
O1	1st section	FG1	O-type	KQ1	Manually operated	DC/12	12V	O2	2nd section	
		FG2	Y-type	KQ2	Hydraulic control	DC/24	24V				
		FG3	H-type	KQ3	Manually operated with detent	/	No electric control				
								
		FG6	With Float	KQ6	Electro-hydraulic control with floating						

LKF Series Flow Control Valve Introduction

LKF series flow control valve with pressure compensation, flow can be adjusted, its special design, so that the orifice area changes with the rotation of the lever, no matter how the pressure of the control port or the overflow oil port changes, the outlet flow is smooth and constant. An adjustable relief valve is integrated into the valve to act as a safety valve, with a preset pressure of 1500psi and field adjustable pressure of 75psi to 3000psi.

Dimensions



Model	Port	Flow
LKF-40-3/8NPT	3/8"-NPT	0-30 L/min(0-8gpm)
LKF-60-1/2NPT	1/2"-NPT	0-60 L/min(0-16gpm)
LKF-114-3/4NPT	3/4"-NPT	0-114 L/min(0-30gpm)

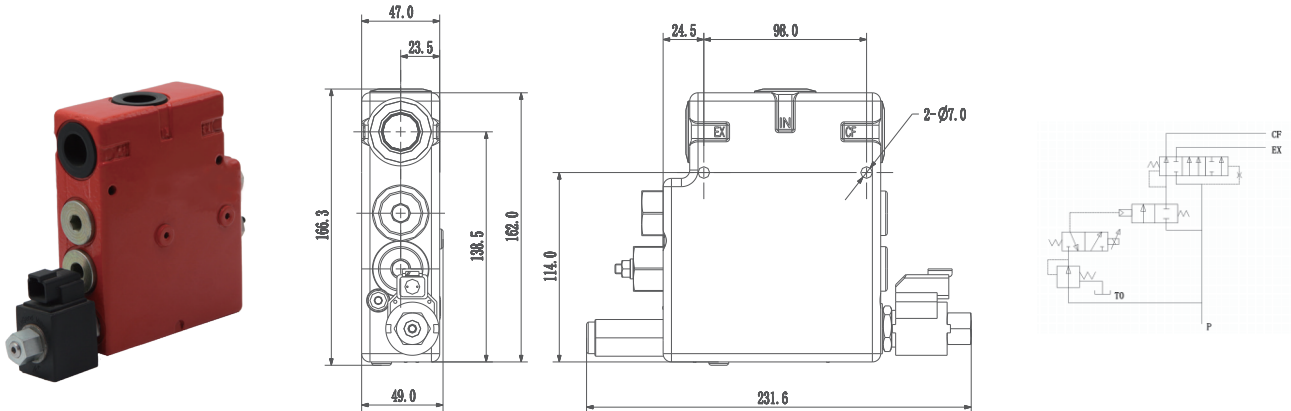
Ordering Code

LKF		-40	-G3/8	-210			
a		b	c	d			
Model	Flow	Port Size		Pressure			
LKF	Manual control	40	0-30L/min(0-8gpm)	G3/8	G3/8	210	21MPa
		60	0-60L/min(0-16gpm)	NPT1/2	1/2" - NPT		
		114	0-114L/min(0-30gpm)	NPT3/4	3/4" - NPT		

LKFE Series Flow Control Valve Introduction

LKFE series electronically flow control valve with pressure compensation, flow can be adjusted, it is through the electric proportional flow pressure reducing valve, in order to control the current size. Thus, the pilot pressure is changed, and the opening of the spool of the flow control valve is changed to control the flow. Current range: 0-1500mA. Use Decci plugs, waterproof and IP69K compliant.

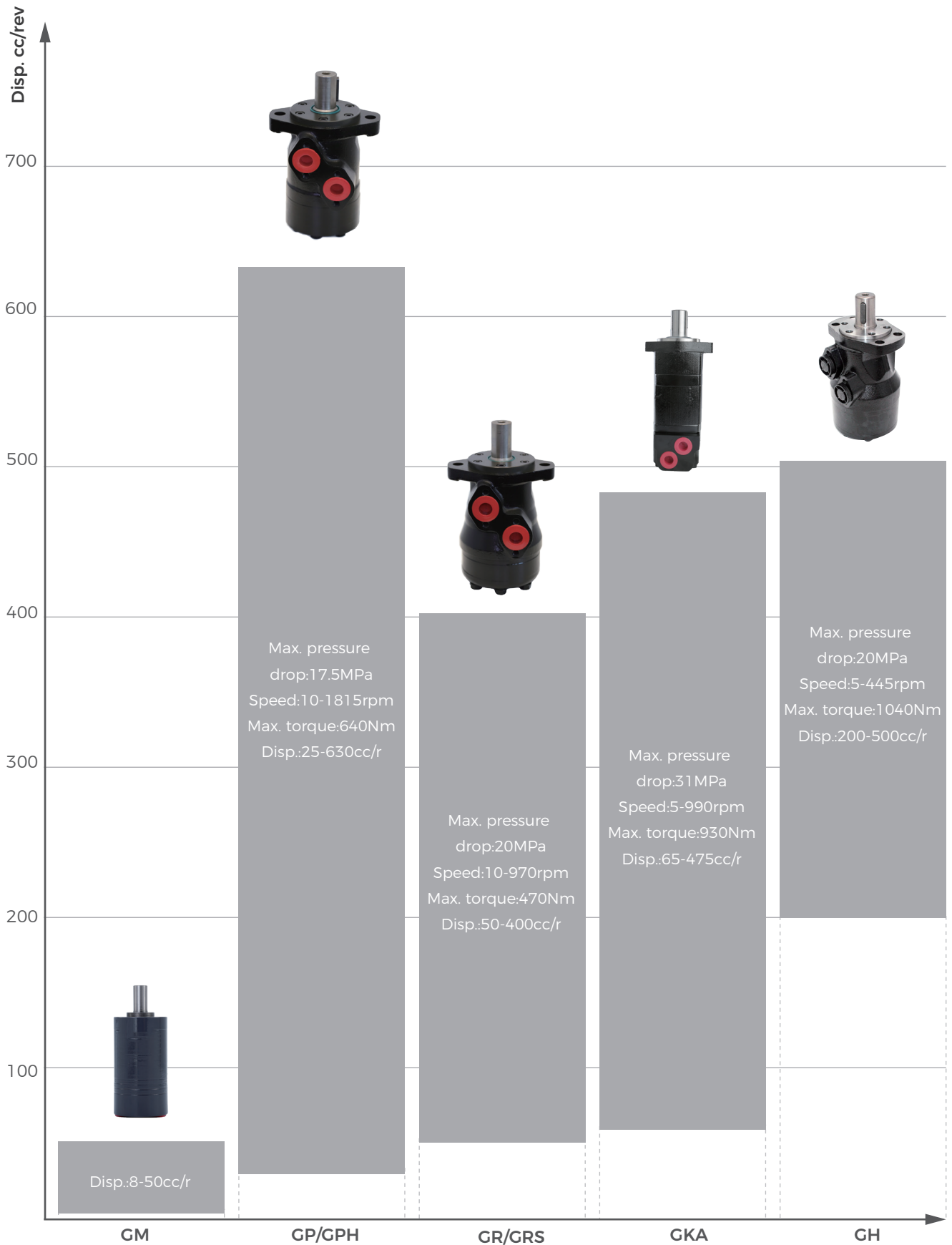
Dimensions

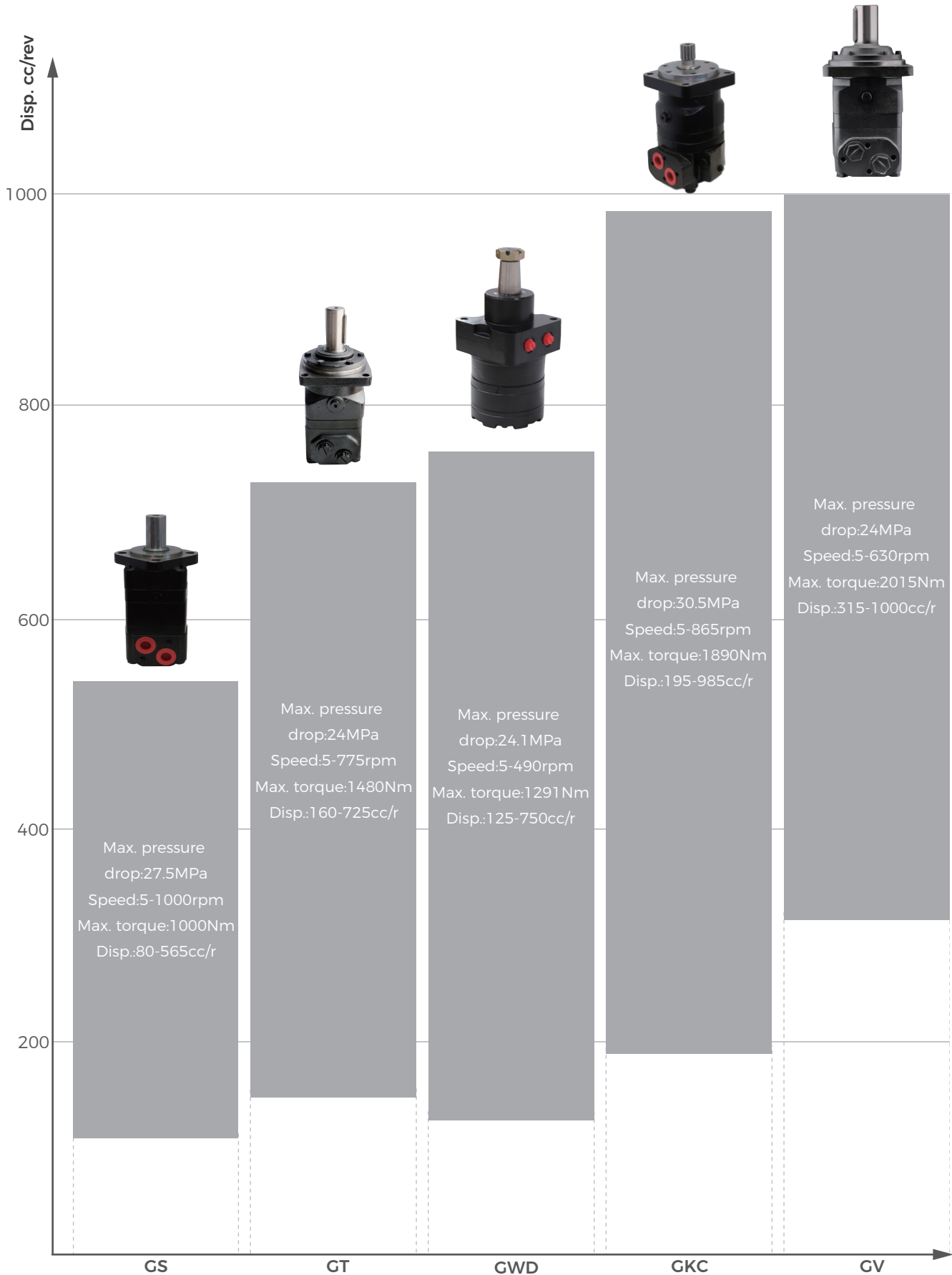


Model	Port	Flow
LKFE-40-3/8NPT	3/8"-NPT	0-30 L/min(0-8gpm)
LKFE-60-1/2NPT	1/2"-NPT	0-60 L/min(0-16gpm)
LKFE-114-3/4NPT	3/4"-NPT	0-114 L/min(0-30gpm)

Ordering Code

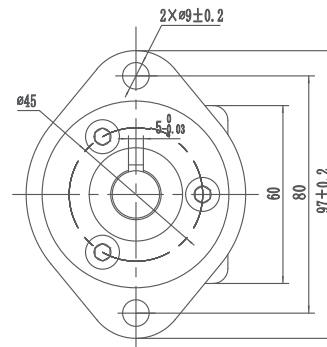
LKFE		-40		-G3/8		-210	
a		b		c		d	
Model	Flow	Port Size		Pressure			
LKFE	Electric control	40	0-30L/min(0-8gpm)	G3/8	G3/8	210	21MPa
		60	0-60L/min(0-16gpm)	NPT1/2	1/2" - NPT		
		114	0-114L/min(0-30gpm)	NPT3/4	3/4" - NPT		





GM Series Orbital Motors

Model		GM8	GM12.5	GM20	GM32	GM40	GM50
Displacement	in ³ /rev	0.5	0.77	1.22	1.93	2.43	3.08
	cm ³ /rev	8.2	12.5	19.9	31.6	39.8	50
Max. speed rpm	Continuous	1950	1550	1000	630	500	400
	Intermittent	2450	1940	1250	800	630	500
Max. torque Nm	Continuous	11	16	25	40	45	46
	Intermittent	15	23	35	57	70	88
Max. pressure drop bar	Continuous	100	100	100	100	90	70
	Intermittent	140	140	140	140	140	140
Max. oil flow L/min	Continuous	16	20	20	20	20	20
	Intermittent	20	25	25	25	25	25
Weight Kg		1.9	2.0	2.1	2.2	2.3	2.5



Ordering Code

GM a		8 b		B4 c		SS d	
Series		Displacement		Flange		Shaft	
GM	GM Series Shaft distribution	8	8.2cm ³ /rev [0.5in ³ /rev]	B4	3-M6 round flange Ø45 pilot Ø31.5x5	SS	Ø16 shaft Flat key 5*5*16
		12.5	12.9cm ³ /rev [0.77in ³ /rev]	B5	3-1/4-28UNF round flange Ø45 pilot Ø31.5x5	ST	Ø15.875 shaft Flat key 4.8*4.8*19.05
		20	19.9cm ³ /rev [1.22in ³ /rev]	AD	2-Ø9 diamond flange Ø80 pilot Ø63x2	RK	Ø16.5 shaft Spline key B17*14, DIN5482
						
		50	50.3cm ³ /rev [3.08in ³ /rev]				

SS e		A f		B g		S h	
Port		Rotation		Paint		Options	
SS	G1/2 plate type 4xM8,G1/4	A	Standard	A	No paint	A	Standard seals
ST	M22 x 1.5 plate type 4xM8,M14 x1.5	R	Reverse	B	Blue paint	B	Standard seal with dustfree ring
RK	7/8-14UNF O-ring plate type 4x5/16- 18UNC,7/16-20 UNF			C	Black paint	V	High temperature
				S	Silver gray	S	Low temperature

GP/GPH Series Orbital Motors

Model		GP(H)25	GP(H)32	GP(H)40	GP(H)50	GP(H)80	GP(H)100	GP(H)125	GP(H)160	GP(H)200	GP(H)250	GP(H)315	GP(H)400
Displacement	in ³ /rev	1.52	1.95	2.44	3.02	4.83	6.04	7.55	9.66	12.1	15.1	19.3	24.16
	cm ³ /rev	25	32	40	49.5	79.2	99	123.8	158.4	198	247.5	316.8	396
Max. speed rpm	Cont.	1600	1560	1500	1210	755	605	486	378	303	242	190	150
	Int.	1815	1720	1750	1515	945	755	605	472	378	303	236	189
Max. torque Nm	Cont.	33	43	62	94	151	193	237	313	366	380	380	360
	Int.	47	61	82	119	195	237	298	378	456	583	560	590
Max. pressure drop bar	Cont.	100	100	120	140	140	140	140	140	140	110	90	70
	Int.	140	140	155	175	175	175	175	175	175	175	140	115
Max. oil flow L/min	Cont.	40	50	60	60	60	60	60	60	60	60	60	60
	Int.	45	55	70	75	75	75	75	75	75	75	75	75
Weight Kg		5.6	5.6	5.7	5.8	5.9	6.1	6.2	6.4	6.6	6.8	7.1	7.6



Ordering Code

GPH		25		A2		S1	
a		b		c		d	
Series		Displacement		Flange		Shaft	
GP	GP Series Shaft distribution	025	25cm ³ /rev[1.52in ³ /rev]	A2	2-Ø13.5 diamond flange Ø106.4 pilot Ø82.5*2.8	S1	Ø25 shaft Flat key 8*7*32
GPH	GPH Series Shaft distribution	032	32cm ³ /rev[1.95in ³ /rev]	A4	4-Ø13.5 diamond flange Ø106.4 pilot Ø82.5*2.8	S2	Ø25.4 shaft Flat key 6.35*6.35*1.75
		040	40cm ³ /rev[2.44in ³ /rev]	H4	4-3/8-16 UNC square flange pilot Ø44.4*2.8	R1	Ø25.4 shaft Spline key SAE 6B
			H5	4-M10 square flange pilot Ø44.4*2.8	T1	Ø28.56 taper shaft1:10 Flat key B5*5*14
		630	623.6cm ³ /rev[38.05in ³ /rev]			
G1		A		S		A	
e		f		g		h	
Port		Rotation		Paint		Options	
G1	G1/2 plate type 4*M8,G1/4	A	Standard	A	No paint	A	Standard
M1	M22*1.5 plate type 4*M8,M14*1.5	R	Reverse	B	Blue paint	N	Large radial force
U2	7/8-14UNF O-ring plate type 4*5/16-18UNC,7/16-20UNF			C	Black paint	L	Low speed
U1	7/8-14NPTF plate type 4*5/ 16-18UNC,7/16-20UNF			S	Silver gray		
G2	PT(Rc)1/2 plate type 4*M8,PT(Rc)1/4						

GR/GRS Series Orbital Motors

Model		GR(S)50	GR(S)80	GR(S)100	GR(S)125	GR(S)160	GR(S)200	GR(S)250	GR(S)315	GR(S)400
Displacement	in ³ /rev	3.14	4.9	6.09	7.67	9.74	12.19	15.26	19.26	24.4
	cm ³ /rev	51.5	80.3	99.8	125.7	159.6	199.8	250.1	315.7	397
Max. speed rpm	Cont.	775	750	600	475	375	300	240	190	150
	Int.	970	940	750	600	470	375	300	240	190
Max. torque Nm	Cont.	100	200	240	300	390	385	390	360	380
	Int.	130	220	280	340	430	460	470	470	470
Max. pressure drop bar	Cont.	140	175	175	175	175	140	110	85	65
	Int.	175	200	200	200	200	175	140	115	90
Max. oil flow L/min	Cont.	40	60	60	60	60	60	60	60	60
	Int.	50	75	75	75	75	75	75	75	75
Weight Kg		6.8	6.9	7.2	7.3	7.5	8	8.4	9.1	9.8

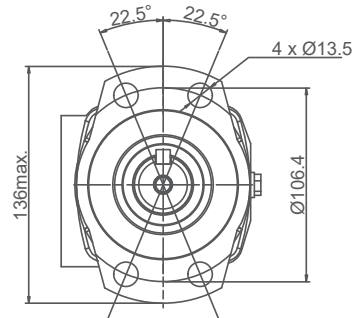


Ordering Code

GR a		80 b		A2 c		S1 d	
Series		Displacement		Flange		Shaft	
GR	GR Series Shaft distribution	50	51.5cm ³ /rev[3.14in ³ /rev]	A2	2-Ø13.5 diamond flange pilot Ø82.5*2.8	S1	Ø25 shaft Flat key 8*7*32
GRS	GRS Series Shaft distribution	80	80.3cm ³ /rev[4.90in ³ /rev]	A4	4-Ø13.5 diamond flange pilot Ø82.5*2.8	S2	Ø25.4 shaft Flat key 6.35*6.35*31.75
		100	99.8cm ³ /rev[6.09in ³ /rev]	H4	4-3/8-16 square flange pilot Ø44.4*2.8	R1	Ø25.4 Spline shaft Spline key SAE6B
			H5	4-M10 square flange pilot Ø44.4*2.8	T1	Ø28.56 Taper shaft 1:10 Flat key B5*5*14
		400	397cm ³ /rev[24.4in ³ /rev]			
G1 e		R f		C g		A h	
Port		Rotation		Paint		Options	
G1	G1/2 plate type 4*M8,G1/4	A	Standard	A	No paint	A	Standard
M1	M22*1.5 plate type 4*M8,M14*1.5	R	Reverse	B	Blue paint	N	Large radial force
U2	7/8-14UNF O-ring plate type 4*5/16-18UNC 7/16-20UNF			C	Black paint	L	Low speed
U1	1/2-14NPTF plate type 4*5/16-18UNC 7/16-20UNF			S	Silver gray		
G2	PT(Rc)1/2 plate type 4*M8,PT(Rc)1/4						

GKA Series Orbital Motors

Model		GKA65	GKA80	GKA100	GKA125	GKA160	GKA200	GKA250	GKA315	GKA395	GKA475
Displacement	in ³ /rev	4.0	4.9	6.2	8.0	9.6	11.9	14.9	18.7	24.0	29.8
	cm ³ /rev	66	80	100	130	160	195	245	305	395	490
Max. speed rpm	Cont.	1075	908	742	576	477	385	308	246	191	153
	Int.	1214	908	924	720	713	577	462	365	335	230
Max. torque Nm	Cont.	186	235	295	385	455	540	660	765	775	845
	Int.	276	345	445	560	570	665	820	885	925	930
Max. pressure drop bar	Cont.	205	205	205	205	205	205	205	205	155	120
	Int.	310	310	310	310	260	260	260	240	190	140
Max. oil flow L/min	Cont.	72	75	75	75	75	75	75	75	75	75
	Int.	87	75	95	95	115	115	115	115	115	115
Weight Kg		8.8	9.3	9.5	9.8	10.0	10.4	11.3	11.3	11.8	12.2

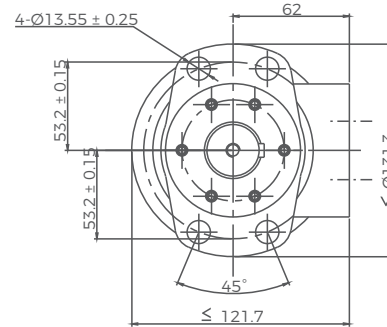


Ordering Code

GKA a		65 b		A7 c		R6 d	
Series		Displacement		Flange		Shaft	
GKA	GKA Series Disc distribution	65	66cm ³ /rev[4.0in ³ /rev]	A7	2 holes diamond flange pilot Ø82.5*6.4	R6	Ø31.25 Shaft Spline key 14-DP12/24
		80	80.3cm ³ /rev[4.90in ³ /rev]	H3	4-Ø13.5 hole square flange pilot Ø82.5*6.4	S6	Ø25.4 shaft Half-round key Ø25.4*6.35
		100	99.8cm ³ /rev[6.09in ³ /rev]	A9	4-hole diamond flange pilot Ø82.5*6.4	R8	Ø25.4 shaft Spline key SAE 6B
			W1	4-Ø13.5 hole square flange pilot Ø107.95*46.5	S1	Ø25 shaft Flat key 8*7*32
		475	490cm ³ /rev[29.8in ³ /rev]	W2	4-Ø13 hole square flange pilot Ø100*6.5	
G7 e		A f		B g		N h	
Port		Rotation		Paint		Options	
G7	G1/2 G1/4	A	Standard	A	No paint	A	Standard
DU	G1/2 7/16-20UNF	R	Reverse	B	Blue paint	N	Large radial force
U9	7/8-14UNF O-Ring 7/16-20UNF			C	Black paint	L	Low speed
SB	7/8-14UNF O-Ring G1/4			S	Silver gray		
M4	M22x1.5 M14x1.5						

GH Series Orbital Motors

Model		GH200	GH250	GH315	GH400	GH500
Displacement	in ³ /rev	12.3	15.4	19.2	24.2	30.7
	cm ³ /rev	201.3	252	314.9	396.8	502.4
Max. speed rpm	Continuous	370	295	235	185	150
	Intermittent	445	350	285	225	180
Max. torque Nm	Continuous	510	610	740	840	820
	Intermittent	580	700	820	980	1040
Max. pressure drop bar	Continuous	175	175	175	155	125
	Intermittent	200	200	200	190	160
Max. oil flow L/min	Continuous	75	75	75	75	75
	Intermittent	90	90	90	90	90
Weight Kg		10.5	11	11.5	12.3	13



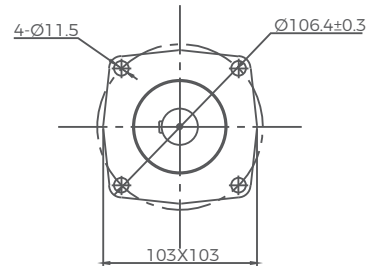
Ordering Code

GH		200		A5		S4	
a		b		c		d	
Series		Displacement		Flange		Shaft	
GH	GH Series Shaft distribution	200	201.3cm ³ /rev[12.9in ³ /rev]	A5	2-Ø13.5 diamond flange pilot Ø82.5*6	S4	Ø32 shaft Flat key 10*8*45
		250	252cm ³ /rev[15.4in ³ /rev]	A6	4-Ø13.5 diamond flange pilot Ø82.5*6	SF	Ø35 shaft Flat key 10*8*45
		315	314.9cm ³ /rev[19.2in ³ /rev]			R3	Ø31.75 shaft , Spline key 14-DP12/24
		400	396.8cm ³ /rev[24.2in ³ /rev]			R6	Ø31.75 Long Shaft Spline key 14-DP12/24
		500	502.4cm ³ /rev[30.7in ³ /rev]			

G1		A		A		A	
e		f		g		h	
Port		Rotation		Paint		Options	
G1	G1/2 plate type 4*M8,G1/4	A	Standard	A	No paint	A	Standard
M1	M22*1.5 plate type 4*M8 M14*1.5	R	Reverse	B	Blue paint	N	Large radial force
U2	7/8-14UNF O-ring plate type 4*5/16-18UNC,7/16-20 UNF			C	Black paint	D	No oil drain port
U1	1/2-14NPTF plate type 4*5/16-18UNC 7/16-20UNF			S	Silver gray	F	Freewheeling
G2	PT(Rc)1/2 plate type 4*M8 PT(Rc)1/4					L	Low speed

GS Series Orbital Motors

Model		GS80	GS100	GS125	GS160	GS200	GS250	GS315	GS400	GS475	GS525	GS565
Displacement	in ³ /rev	4.91	6.1	7.67	9.74	12.2	15.3	19.2	24.2	28.96	31.88	34.47
	cm ³ /rev	80.5	100	125.7	159.7	200	250	314.9	397	474.6	522.7	564.9
Max. speed rpm	Cont.	810	750	600	470	375	300	240	190	160	145	130
	Int.	1000	900	720	560	450	360	290	230	190	175	160
Max. torque Nm	Cont.	240	305	375	490	610	720	825	865	850	850	850
	Int.	310	390	490	600	720	870	1000	990	990	990	990
Max. pressure drop bar	Cont.	210	210	210	210	210	200	200	160	130	115	105
	Int.	275	275	275	275	275	250	240	190	150	135	125
Max. oil flow L/min	Cont.	65	75	75	75	75	75	75	75	75	75	75
	Int.	80	90	90	90	90	90	90	90	90	90	90
Weight Kg		9.9	10.1	10.4	10.8	11.2	11.7	12.4	13.1	14.1	14.6	15

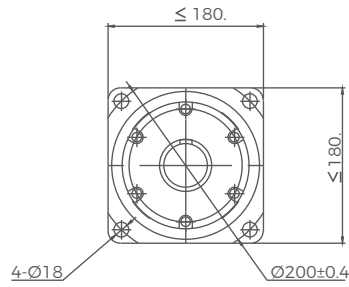


Ordering Code

GS a		200 b		A7 c		C1 d	
Series		Displacement		Flange		Shaft	
GS	GS Series Disc distribution	80	80.5cm ³ /rev[4.9in ³ /rev]	A7	2-Ø13.5 diamond flange, Ø106.4 pilot Ø82.5*6.3	S4	Ø32 shaft Flat key 10*8*45
GSS	GSS Series Bearingless Disc distribution	100	100cm ³ /rev[6.1in ³ /rev]	H3	4-Ø13.5 square flange, Ø106.4 pilot Ø82.5*6.3	R3	Ø31.75 Shaft Spline key 14-DP12/24
		125	125.7cm ³ /rev[7.67in ³ /rev]	A9	6-Ø13.5 diamond flange, Ø106.4 pilot Ø82.5*2.6	T4	Ø35 shaft Flat key B6*6*20
			W1	4-Ø13.5 Wheel flange, Ø160 pilot Ø125*8	
		565	564.9cm ³ /rev[34.47in ³ /rev]				
C9 e		R f		S g		A h	
Port		Rotation		Paint		Options	
C9	G1/2 plate type 2*M10,G1/4	A	Standard	A	No paint	A	Standard
M8	M22*1.5 plate type 2*M10,M14*1.5	R	Reverse	B	Blue paint	N	Large radial force
UB	7/8-14UNF O-ring plate type 2*3/8-16UNC,7/16-20UNC			C	Black paint	L	Low speed
UC	1/2-14NPTF plate type 2*3/8-16UNC,7/16-20UNF			S	Silver gray		

GT Series Orbital Motors

Model		GT160	GT200	GT250	GT315	GT400	GT500	GT630	GT725
Displacement	in ³ /rev	9.83	12.29	15.36	19.9	25.06	31.95	38.52	44.2
	cm ³ /rev	161.1	201.4	251.8	326.3	410.9	523.6	631.2	724.3
Max. speed rpm	Cont.	622	620	496	382	304	238	197	172
	Int.	775	752	601	461	368	289	234	209
Max. torque Nm	Cont.	470	590	730	950	1080	1220	1300	1270
	Int.	560	710	880	1140	1260	1370	1480	1470
Max. pressure drop bar	Cont.	200	200	200	200	180	160	140	120
	Int.	240	240	240	240	210	180	160	140
Max. oil flow L/min	Cont.	100	125	125	125	125	125	125	125
	Int.	125	150	150	150	150	150	150	150
Weight Kg		20	21.5	21	22	23	24	23.5	24.5

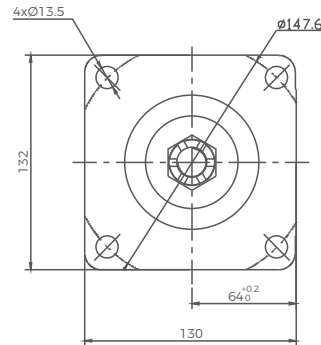


Ordering Code

GT a		160 b		H6 c		C2 d	
Series		Displacement		Flange		Shaft	
GT	GT Series Disc distribution	160	161.1cm ³ /rev[9.83in ³ /rev]	H6	4-Ø14 Method of orchid Ø160 pilot Ø125*9	C2	Spline key 16-DP12/24
GTS	GTS Series Bearingless Disc distribution	200	201.4cm ³ /rev[12.29in ³ /rev]	H7	4-Ø14.5 Method orchid Ø162 pilot Ø127*9	SK	Ø40 shaft Flat key 12*8*70
		250	251.8cm ³ /rev[15.36in ³ /rev]	W2	4-Ø18 Wheel flange Ø200 pilot Ø160*7	SL	Ø38.1 shaft Flat key 9.53*9.53*57.15
			B2	4-Ø14 Round flange Ø160 pilot Ø125*8		
		725	724.3cm ³ /rev[44.2in ³ /rev]				
G3 e		A f		B g		N h	
Port		Rotation		Paint		Options	
G3	G3/4 plate type 4*M10,G1/4	A	Standard	A	No paint	A	Standard
M5	M27*2 plate type 4*M10,M14*1.5	R	Reverse	B	Blue paint	N	Large radial force
U4	1-1/16-12UN O-ring,9/16-18UNF			C	Black paint	L	Low speed
U5	1-1/16-12UN O-ring,7/16-20UNF			S	Silver gray		
G4	G3/4,G1/4						

GWD Series Orbital Motors

Model		GWD120	GWD160	GWD200	GWD230	GWD260	GWD300	GWD350	GWD375	GWD470	GWD540	GWD620	GWD750
Displacement	in ³ /rev	7.4	9.9	12.4	14.2	15.9	18.3	21.2	22.8	28.3	32.7	38.5	45.6
	cm ³ /rev	121	162	204	232	261	300	348	363	465	536	631	748
Max. speed rpm	Cont.	360	370	300	260	260	250	220	200	160	140	120	100
	Int.	490	470	370	320	350	320	270	250	200	170	150	130
Max. torque Nm	Cont.	327	475	542	611	712	825	921	1006	1096	983	1014	1062
	Int.	383	542	633	712	791	938	1045	1158	1184	1243	1291	1237
Max. pressure drop bar	Cont.	207	207	207	207	207	207	207	207	172	138	121	103
	Int.	241	241	241	241	241	241	241	241	189	173	155	121
Max. oil flow L/min	Cont.	45	61	68	68	76	76	76	76	76	76	76	76
	Int.	61	76	83	83	91	95	95	91	91	91	91	91
Weight Kg		13.3	13.3	13.7	13.8	14.1	14.4	15.5	15.0	15.5	16.1	16.8	17.5



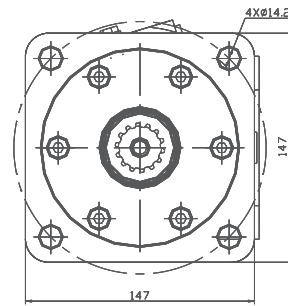
Ordering Code

GWD		120		W4		SH	
a		b		c		d	
Series		Displacement		Flange		Shaft	
GWD	GWD Series Orbit wheel motor	120	121 cm ³ /rev	W4	Ø147.6 Wheel type flange Front pilot 4*Ø13.1, rear pilot 128.5*7	SH	Ø35 shaft Flat key 10*8*45
		160	162 cm ³ /rev	W5	Ø147.6 Wheel type flange Front pilot 4*Ø13.1, rear pilot Ø127*7	SL	Ø38 shaft Flat key 9.5*9.5*38.1
		200	204 cm ³ /rev			TB	Ø35 tapered shaft 1:10 Flat key 7.96*7*31.5
					TA	Ø38.1 tapered shaft 1:8 Flat key 7.96*7*36.5
		750	748 cm ³ /rev				

UD		R		A		A	
e		f		g		h	
Port		Rotation		Paint		Options	
UD	9/16-18UNF	A	Standard	A	No paint	A	Standard
UF	7/8-14 UNF	R	Reverse	B	Blue paint	F	Free wheeling
GC	G1/2			C	Black paint	V	High temperature
MC	M22*1.5			S	Silver gray	S	Low temperature

GKC Series Orbital Motors

Model		GKC195	GKC245	GKC310	GKC395	GKC490	GKC625	GKC800	GKC985
Displacement	in ³ /rev	11.9	15.0	19.0	23.9	30.0	38.0	49.0	60.0
	cm ³ /rev	195	245	310	390	490	625	805	985
Max. speed rpm	Cont.	775	615	485	387	307	241	187	153
	Int.	866	834	698	570	454	353	280	230
Max. torque Nm	Cont.	575	735	930	1155	1445	1480	1582	1685
	Int.	860	1100	1355	1635	1885	1898	1850	1875
Max. pressure drop bar	Cont.	205	205	205	205	205	170	140	140
	Int.	310	310	310	310	275	221	170	140
Max. oil flow L/min	Cont.	150	150	150	150	150	150	150	150
	Int.	170	210	225	225	225	225	225	225
Weight Kg		24.9	25.2	25.6	26.3	27.0	27.9	29.0	30.4



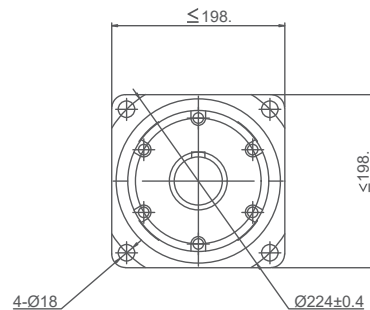
Ordering Code

GKC a		195 b		CC c		Y1 d	
Series		Displacement		Flange		Shaft	
GKC	GKC Series Disc distribution	195	195cm ³ /rev	CC	4-Ø14.2 Square flange Ø162 pilot Ø127*13.2	Y1	Ø35 shaft Flat key 12*12*63
		245	245cm ³ /rev			G2	Ø38.1 shaft Flat key 9.53*9.53*41.9
		310	310cm ³ /rev			FE	Ø38.1 shaft Spline key 17-DP12/24
					T1	1:8 Ø45 tapered shaft 11.13*11.13*31.75
		985	985cm ³ /rev				

G3 e		A f		C g		A h	
Port		Rotation		Paint		Options	
G3	G3/4 plate 4xM10,G1/4	A	Standard	A	No paint	A	Standard
SF5	1-5/16-12UN O-ring, 7/16-20UNF	R	Reverse	B	Blue paint	N	Large radial force
SF7	G1,G1/4			C	Black paint	D	No oil drain port
				S	Silver gray	F	Free wheeling

GV Series Orbital Motors

Model		GV315	GV400	GV500	GV630	GV800	GV1000
Displacement	in ³ /rev	19.18	24.45	30.48	38.38	48.91	60.39
	cm ³ /rev	314.5	400.9	499.6	629.1	801.8	990
Max. speed rpm	Cont.	510	500	400	320	250	200
	Int.	630	600	480	380	300	240
Max. torque Nm	Cont.	920	1180	1460	1660	1880	2015
	Int.	1110	1410	1760	1940	2110	2280
Max. pressure drop bar	Cont.	200	200	200	180	160	140
	Int.	240	240	240	210	180	160
Max. oil flow L/min	Cont.	160	200	200	200	200	200
	Int.	200	240	240	240	240	240
Weight Kg		31.8	32.6	33.5	34.9	36.5	38.6



Ordering Code

GV		315		H9		C3	
a		b		c		d	
Series		Displacement		Flange		Shaft	
GV	GV Series Disc distribution	315	314.5cm ³ /rev[19.18in ³ /rev]	H9	4-Ø18 Square flange Ø200 pilot Ø160*11	C3	Spline key 16-DP10/20
GVS	GVS Series Bearingless Disc distribution	400	400.9cm ³ /rev[24.45in ³ /rev]	W3	4-Ø18 Wheel flange Ø224 pilot Ø180*10	SN	Ø50 shaft Flat key 14*9*70
		500	499.6cm ³ /rev[30.48in ³ /rev]	B3	4-Ø14 Round flange Ø180 Spigot Ø140*8	RB	Ø53.975 shaft Spline key 16-DP8/16
		629.1cm ³ /rev[38.38in ³ /rev]			RC	Ø53.975 shaft Spline key 16-DP8/16
		1000	801.8cm ³ /rev[48.91in ³ /rev]				
G5		R		C		A	
e		f		g		h	
Port		Rotation		Paint		Options	
G5	G1 plate type 4*M10,G1/4	A	Standard	A	No paint	A	Standard
M6	M32*2 Plate type 4*M12,M14*1.5	R	Reverse	B	Blue paint	V	High temperature
U6	1-5/16-12UN O-ring plate type, 9/16-18UNF			C	Black paint	S	Low temperature
G6	G1,G1/4			S	Silver gray		
M7	M33*2,M14*1.5						

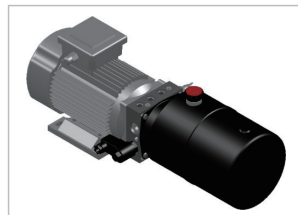
Ryan has developed and manufactured more than 100 power packs, this product is a modular custom product, you are welcome to contact the Ryan engineer, for you to choose a more suitable product solution, the following are some common product solution examples.

Ordering Code

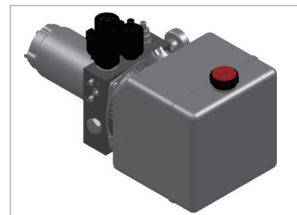
DC-	F**-	0.25/	D-	**/	24/	**/	12-	4	H-	A	
a	b	c	d	e	f	g	h	i	j	k	
Motor	Schematic diagram	Disp.(cc/r)	System pressure	Motor power (kW)	Motor voltage (V)	Motor speed (RPM)	Solenoid valve voltage (V)	Tank volume (L)	Installation	Port size	
DC-	DC Motor	Fxx-	0.25/	D- 100bar	xx/	24/	xx/	12-	4	H- Horizontal	A M14x1.5
AC-	Three-phase AC Motor		0.5/	E- 160bar				24-	5	HS- Side Hor	B M16x1.5
A-	Single-phase AC Motor		0.75/	F- 200bar					6	V- Vertical	C G1/4
			1.6/	G- 250bar					8	T- Special	D G3/8
			2/	H- 315bar					10		E NPT3/8
			2.5/						12		F 9/16"SAE
			3/								
			3.5/								
			4/								
			5/								



Semi-electric Stacker Power Pack



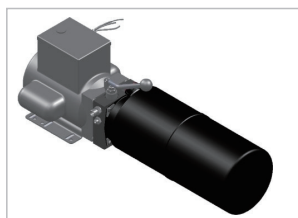
Ramp Power Pack



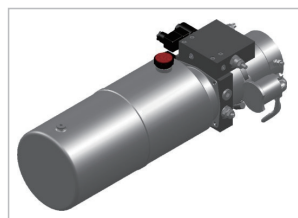
Balance Adjustment Power Pack



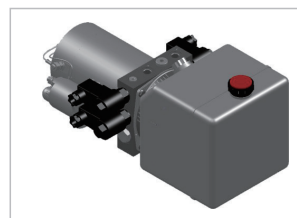
Aerial Working Platform Power Pack



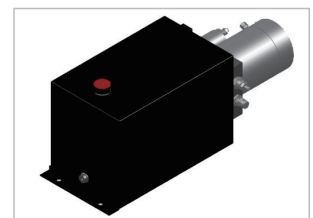
Vehicle Lift Power Pack



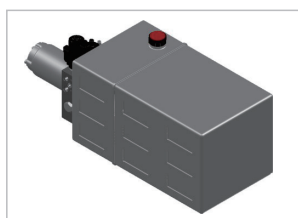
Tailgate Power Pack



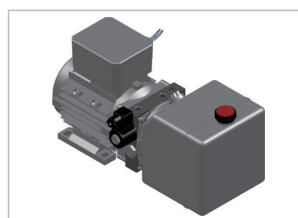
Scissor Lift Power Pack



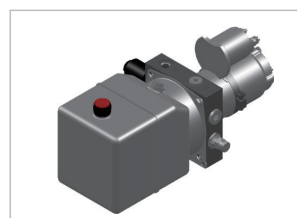
Electrical Stacker Power Pack



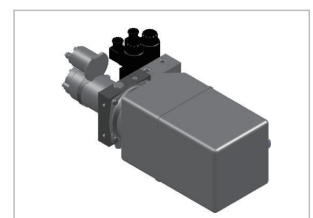
Telescopic Power Pack



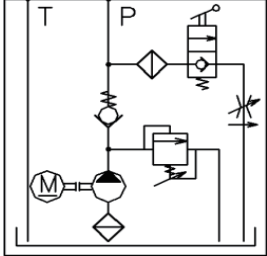
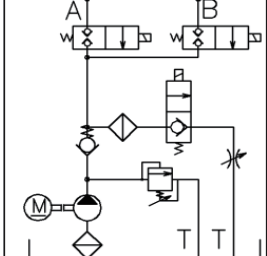
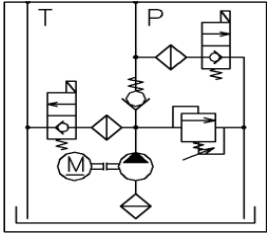
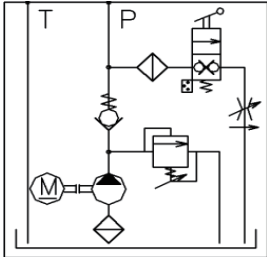
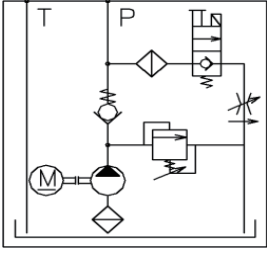
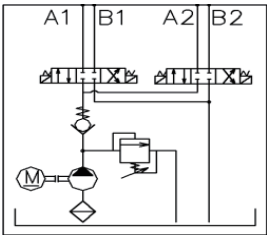
Pallet Vehicle Power Pack

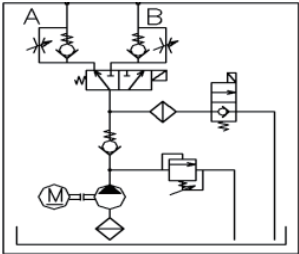
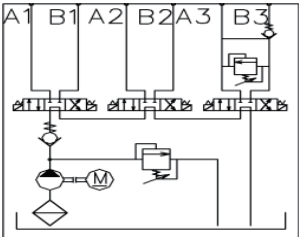
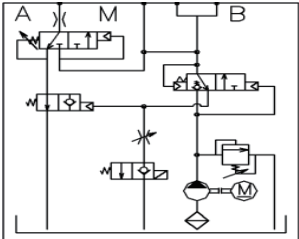
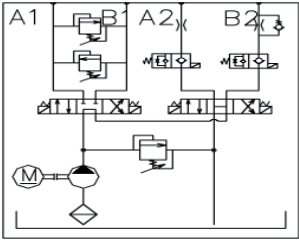
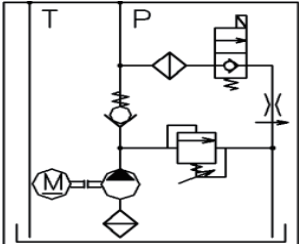
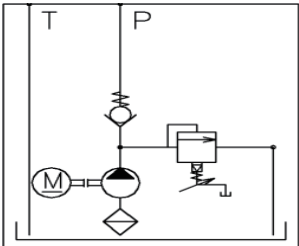


Mini Power Pack



Van Truck Power Pack

Application	Model	Disp. (cc/r)	Tank volume(L)	Pressure (Mpa)	Motor power(kW)	Voltage (V)	Schematic diagram
Vehicle Lift	AC-F5-2.1(2.7)/F-2.2/220(380)/2850/xx-10(12)V-D	2.1-2.7	10-12	18-20	2.2	AC220(380)	
Scissor Lift	AC-F9-2.1/F(G,H)-2.2(3.0)/220(380)/2850/xx-20V-C	2.1	20	20-28	2.2(3.0)	AC220(380)	
Aerial Working Platform	AC-F11-1.1/F-1.5/220/2850/xx-6H-C	1.1	6	18	1.5	AC220	
Semi-electric Stacker	DC-F6-1.6(2.1,2.6)/F-1.6(2.2)/12(24)/2500/xx-5(6,8)HS-D	1.6-2.6	5-8	20	1.6(2.2)	DC12(24)	
Electric Stacker	DC-F10S-1.6(2.6)/F-1.6(2.2)/12(24)/2500/xx-7V-D	1.6-2.6	7	20	1.6(2.2)	DC12(24)	
Van Truck	DC-F39-2.5/E-2/24/2800/xx-8H-A	2.5	8	14	2	DC24	

Application	Model	Disp. (cc/r)	Tank volume(L)	Pressure (Mpa)	Motor power(kW)	Voltage (V)	Schematic diagram
Tailgate	DC-F15-2.1/F-2.0(2.2)/12(24)/2500/xx-9H-A	2.1	9	20	2.0(2.2)	DC12 (24)	
Tyre Changer	AC-F40-3.2(4.2)/F-1.5(2.2)/380/1440/xx-6H-C	3.2-4.2	6	20	1.5(2.2)	AC380	
Ramp	AC-F32-3.2/E-1.5/380/1440/xx-6H-C	3.2	6	16	1.5	AC380	
Snow Sweeper	DC-F36-1.6/F-1.6/12/2500/xx-5H-C	1.6	5	20	1.6	DC12	
Pallet vehicle	DC-F10-0.5(0.75)/E-0.8/12(24)/3650/xx-1(1.2,1.7)H-C	0.5-0.75	1.0-1.7	16	0.8	DC12 (24)	
Mini for Medical Equipment	DC-F02-0.25(0.5)/D-0.5/24/2000/xx-1H-C	0.25-0.5	1	6.5-10	0.5	DC24	

© RYAN | 2023



Shanghai Ryan Hydraulic Fluid Power Co., Ltd

Add. Room 2201-2202, 1717 North Sichuan Road,
Hongkou Shanghai, China
P.C. 200080
Tel. +86-21-56626882
Mail. sales@ryanhydraulic.com

